

LEGEND

- ELECTRICAL SERVICES SWITCHBOARD.
- SWITCHBOARD / CONTROL PANEL NOT PROVIDED AS PART OF THE ELECTRICAL SUBCONTRACT.
- SINGLE POWER OUTLET.
- DOUBLE POWER OUTLET.
- DOUBLE POWER OUTLET C/W INTEGRAL USB-A AND USB-C CHARGING POINTS, MOUNTED ABOVE BENCH.
- SPECIAL PURPOSE POWER OUTLET.
- SIGNAGE CONNECTION.
- SINGLE PHASE ISOLATOR.
- THREE PHASE ISOLATOR.
- CONDUIT ROUTE.
- ELECTRICAL SERVICES PIT, TYPE AS NOTED.
- HAND DRYER CONNECTION.
- ELECTRICAL FLOOR BOX, TYPE AS NOTED.
- ONE-WAY LIGHT SWITCH.
- TWO-WAY LIGHT SWITCH.
- DAY LIGHT DETECTOR SWITCH.
- LIGHTING PROXIMITY DETECTOR SWITCH.
- MOVEMENT DETECTOR SWITCH.
- LIGHTING CONTROL SWITCH PANEL, TYPE AS NOTED.
- CIRCUIT LINE.
- SWITCH LINE.
- POWER CIRCUIT DESIGNATION. DENOTES DB AND CIRCUIT.
- LIGHTING CONTROL CHANNEL REFERENCE.
- ELECTRICAL EQUIPMENT AS NOTED.
- RJ45 COMMUNICATIONS OUTLET.
- FIRE INDICATOR PANEL.
- FUSE.
- SINGLE PHASE.
- THREE PHASE.
- CURRENT TRANSFORMER C/W REMOVABLE LINK.
- FUSE LINK.
- COMBINED FUSE SWITCH.
- CIRCUIT BREAKER.
- ISOLATOR.
- RESIDUAL CURRENT DEVICE.
- CONTACTOR - NORMALLY OPEN.
- CONTACTOR - NORMALLY CLOSED.
- REVENUE METER TYPE 1.
- REVENUE METER TYPE 2.

LEGEND

- ELECTRIC VEHICLE CHARGING METER.
- ENERGY MONITORING METER.
- MANUAL TRANSFER SWITCH.
- SECURITY CCTV POINT.
- SECURITY INTRUDER DETECTOR 360 DEG.
- ACCESS CONTROL CARD READER.
- ACCESS CONTROL EXIT PUSH BUTTON.
- ACCESS CONTROL DOOR MAGNETIC HOLDER.
- ACCESS CONTROL ELECTRIC STRIKE.
- ACCESS CONTROL DOOR REED SWITCH.
- ACCESS CONTROL ROLLER SHUTTER DOOR REED SWITCH.
- ACCESS CONTROL ARMING / DISARMING KEY PANEL.
- NBN PREMISE CONNECTION DEVICE.
- NBN NETWORK TERMINATION DEVICE.
- AUDIO OUTLET.
- 4-INCH BACKGROUND MUSIC / PA SPEAKER.
- 6.5-INCH BACKGROUND MUSIC / PA SPEAKER.
- 8-INCH BACKGROUND MUSIC / PA SUBWOOFER SPEAKER.
- WALL MOUNTED BACKGROUND MUSIC / PA SPEAKER.
- REFER TO DETAIL NOTED FOR THE AREA SHOWN HATCHED. ADDITIONAL OUTLETS & FITTINGS MAY BE SHOWN ON DETAIL.
- SECURITY STROBE.
- PIZEO SIREN.
- FIRE ALARM VISUAL INDICATOR.
- MONITORED FLOW SWITCH.
- MONITORED VALVE.
- ASPIRATING SMOKE DETECTOR.
- RECESSED FIRE ALARM SPEAKER.
- SURFACE MOUNTED FIRE ALARM SPEAKER.
- FIRE ALARM HORN.
- E1: RECESSED NON-MAINTAINED EMERGENCY LIGHT, WHITE.
- E2: SURFACE MOUNTED NON-MAINTAINED EMERGENCY LIGHT, WHITE.
- E3: RECESSED NON-MAINTAINED EMERGENCY LIGHT, BLACK.
- EX: GENERAL EMERGENCY LED EXIT LIGHT.
- WP EX: WEATHERPROOF EMERGENCY LED EXIT LIGHT.
- Lx: LIGHT FITTING C/W NON-MAINTAINED EMERGENCY BATTERY PACK. TYPE AS NOTED.
- L1: 1200 LONG SURFACE MOUNTED BATTEN, C/W NON-MAINTAINED EMERGENCY PACK.
- L2: SURFACE MOUNTED IP65 CARPARK LIGHT.
- L3: 1200 LONG SURFACE MOUNTED BATTEN.
- L4: 1200 LONG IP66 SURFACE MOUNTED BATTEN C/W MOVEMENT SENSOR.
- L5: SURFACE CAN DOWNLIGHT, DIMMABLE.

LEGEND

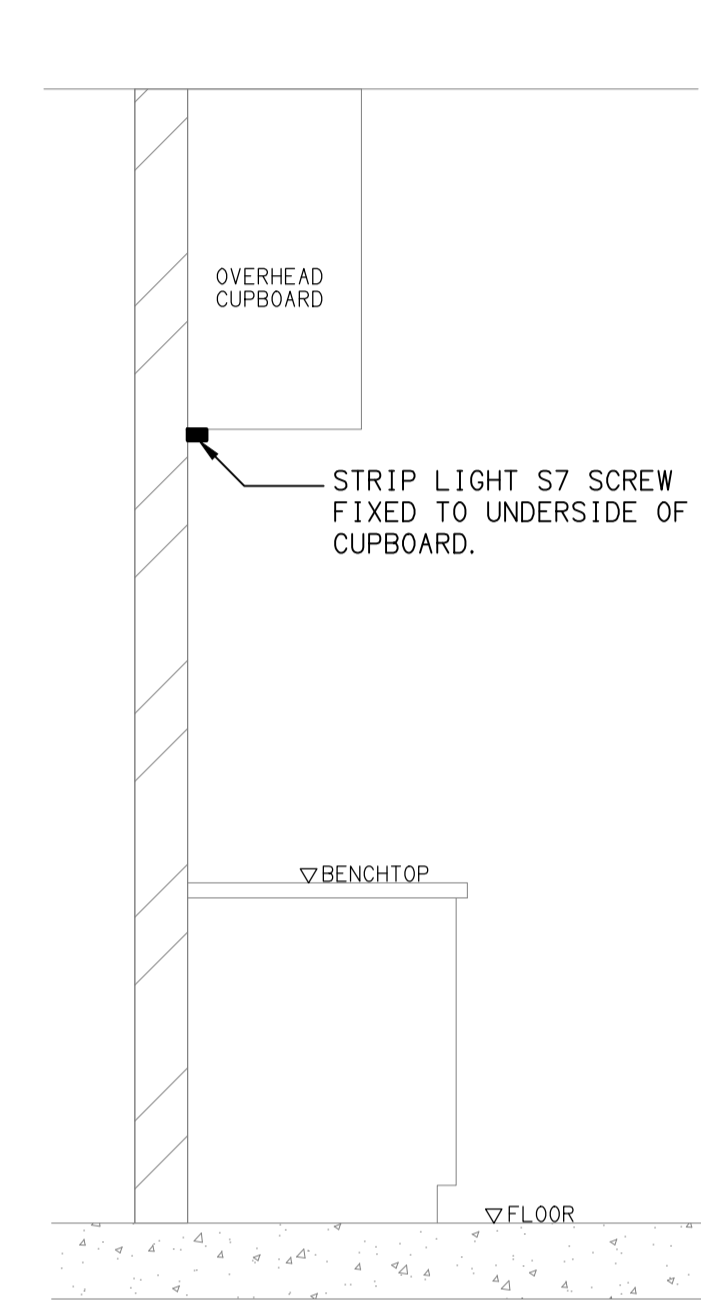
- L6: GARDEN STAKE FITTING, DIMMABLE.
- L7: SURFACE MOUNTED GROW LIGHTS.
- L8: INGROUND IP67 ADJUSTABLE UPLIGHT, DIMMABLE.
- L9: EXTERNAL WALL LIGHT, DIMMABLE.
- L10: 45W CARPARK POLE LIGHT, PARAPET MOUNTED 9m ABOVE CARPARK LEVEL.
- L11: 28W CARPARK POLE LIGHT, PARAPET MOUNTED 9m ABOVE CARPARK LEVEL.
- L12: 28W CARPARK POLE LIGHT, GROUND MOUNTED 9m ABOVE CARPARK LEVEL.
- L13: 600 x 300 RECESSED FLAT PLATE FITTING.
- L14: 1200 x 300 RECESSED FLAT PLATE FITTING.
- L15: AMENITY SHOWER RECESSED DOWNLIGHT.
- L16: SUSPENDED HIGH BAY FITTING, DIMMABLE.
- L17: SURFACE MOUNTED CAN DOWNLIGHT.
- L18: RECESSED DOWNLIGHT.
- L19: INTERNAL WALL LIGHT.
- L20: SURFACE MOUNTED ADJUSTABLE DOWNLIGHT.
- L21: 1200 x 300 SUSPENDED FLAT PLATE FITTING.
- L22: RECESSED NON-DIMMABLE DOWNLIGHT, BLACK.
- RDL1: RECESSED DOWNLIGHT, DIMMABLE.
- RDL2: RECESSED DOWNLIGHT, DIMMABLE.
- RDL3: RECESSED DOWNLIGHT, NON-DIMMABLE.
- RDL4: RECESSED DOWNLIGHT, DIMMABLE BLACK.
- RDL5: RECESSED DOWNLIGHT, DIMMABLE BLACK.
- RDL6: RECESSED DOWNLIGHT, BLACK.
- SDL1: SURFACE MOUNTED CUSTOM LIGHT, DIMMABLE.
- SDL2: SURFACE MOUNTED CAN DOWNLIGHT, DIMMABLE.
- SDL3: SURFACE MOUNTED CAN DOWNLIGHT, NON-DIMMABLE.
- SDL4: SURFACE MOUNTED CAN DOWNLIGHT, DIMMABLE BLACK.
- WL1: EXTERNAL WALL LIGHT, DIMMABLE.
- WL2: EXTERNAL WALL LIGHT, DIMMABLE.
- WL3: INTERNAL WALL LIGHT, DIMMABLE.
- WL4: INTERNAL WALL LIGHT, DIMMABLE.
- WL5: INTERNAL WALL LIGHT.
- PL1: CUSTOM DECORATIVE PENDANT, DIMMABLE.
- PL2: 300 DIA BALL DECORATIVE PENDANT, DIMMABLE.
- PL3: NOT USED.
- PL4: CUSTOM DECORATIVE PENDANT, DIMMABLE.
- PL5: 300 DIA BALL DECORATIVE PENDANT, DIMMABLE.
- CAT: CATENARY / FESTOON LIGHTING.
- TL1: TABLE LAMP.
- Sx: CEILING / JOINERY STRIP LIGHT, TYPE AS NOTED.

LEGEND

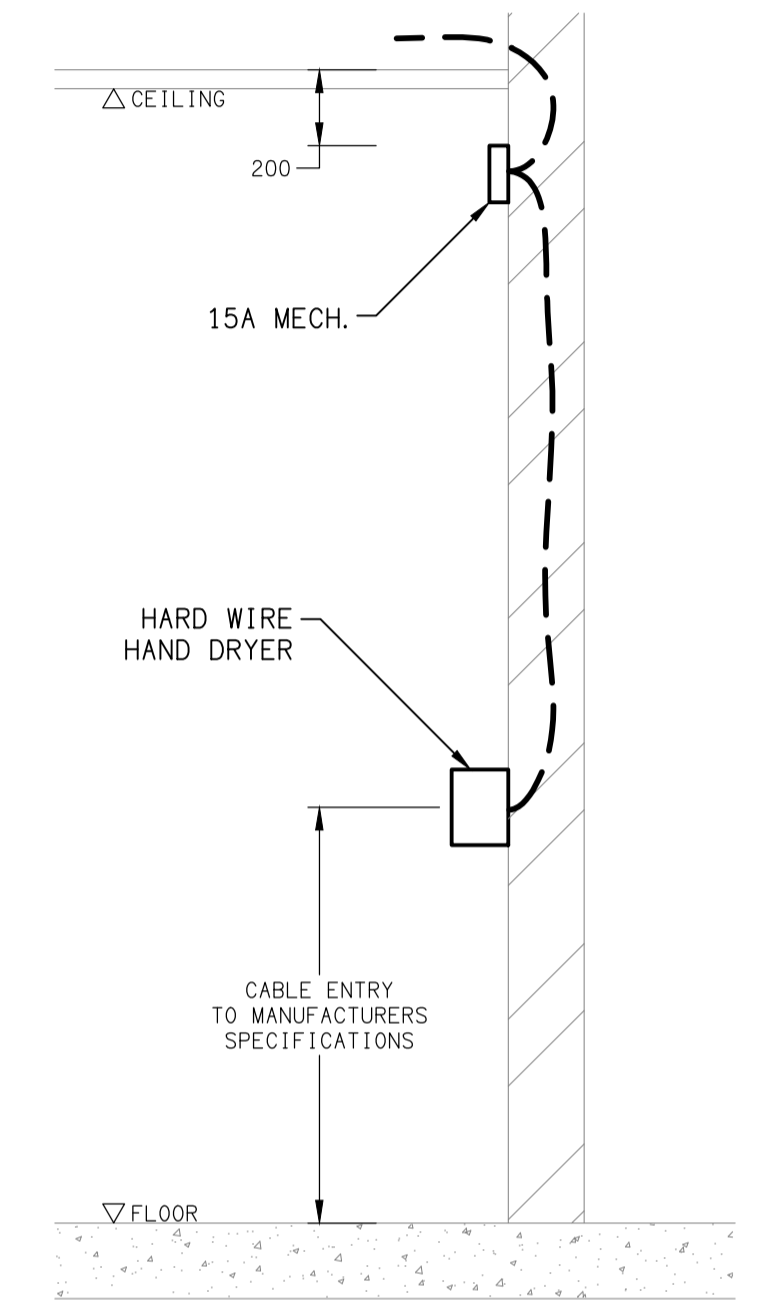
- HE/C: SOFFIT FLUSH MOUNTED HEATER.
- HE/W: WALL MOUNTED ADJUSTABLE HEATER.
- H1: PENDANT HEAT LAMP.

ABBREVIATIONS

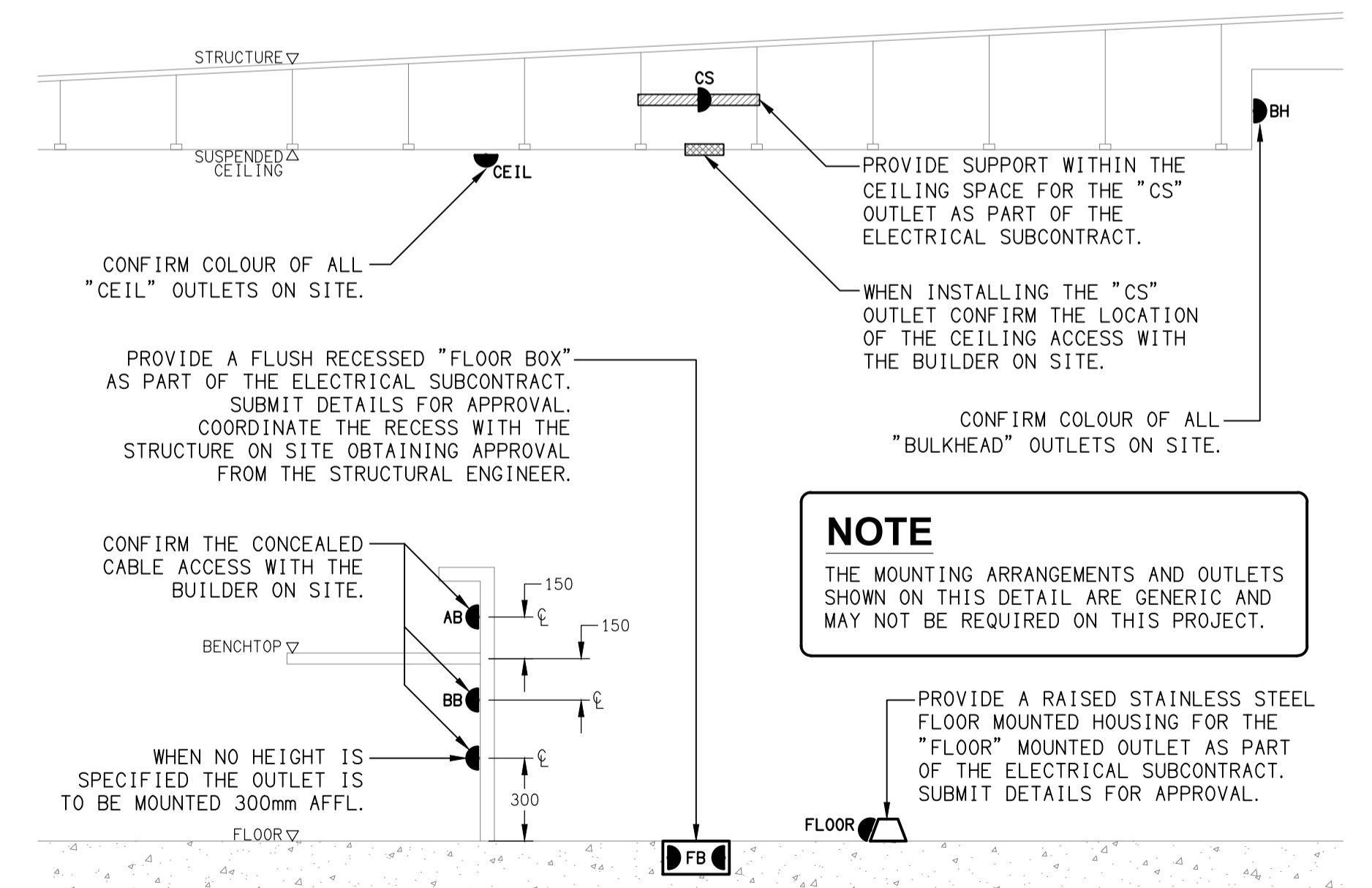
- A - AMP CURRENT RATING
- AB - MOUNT ABOVE BENCH.
- AFFL - ABOVE FINISHED FLOOR LEVEL.
- BB - MOUNT BELOW BENCH.
- CEIL - MOUNT ON CEILING.
- C/W - COMPLETE WITH.
- HWS - HOT WATER SYSTEM.
- MCB - MINIATURE CIRCUIT BREAKER.
- MCCB - MOLDED CASE CIRCUIT BREAKER.
- MSB - MAIN SWITCHBOARD.
- N - NEON / LED INDICATOR WHEN ON.
- NBN - NATIONAL BROADBAND NETWORK.
- NTS - NOT TO SCALE.
- QDC - QUEENSLAND DEVELOPMENT CODE.
- RCBO - CIRCUIT BREAKER C/W AN INTEGRAL 30mA RESIDUAL CURRENT DEVICE.
- RCD - CIRCUIT PROTECTED VIA A 30mA RESIDUAL CURRENT DEVICE.
- RSD - ROLLER SHUTTER DOOR.
- UNO - UNLESS NOTED OTHERWISE.
- WAP - WIRELESS ACCESS POINT.
- WP - WEATHERPROOF TO IP56 UNO.
- 500 - NUMBER DENOTES MOUNTING HEIGHT AFFL.



DETAIL
"S7" TYPE STRIP LIGHT MOUNTING
NOT TO SCALE



DETAIL
HAND DRYER CONNECTION
NOT TO SCALE



DETAIL
TYPICAL OUTLET MOUNTINGS
NOT TO SCALE

NOTE
THE MOUNTING ARRANGEMENTS AND OUTLETS SHOWN ON THIS DETAIL ARE GENERIC AND MAY NOT BE REQUIRED ON THIS PROJECT.